

INTERNATIONAL CONFERENCE

# Urban adaptation, planning and practice: Supporting nature-based solutions

17<sup>th</sup> - 19<sup>th</sup> October 2016

## Venue:

Prague City Council  
Mariánské náměstí 2, 110 00 Prague,  
Czech Republic

Conference is organized under the auspices of  
Ms. Petra Kolínská, Deputy Mayor of Prague and  
Ms. Jana Plamínková, Councillor of City of Prague

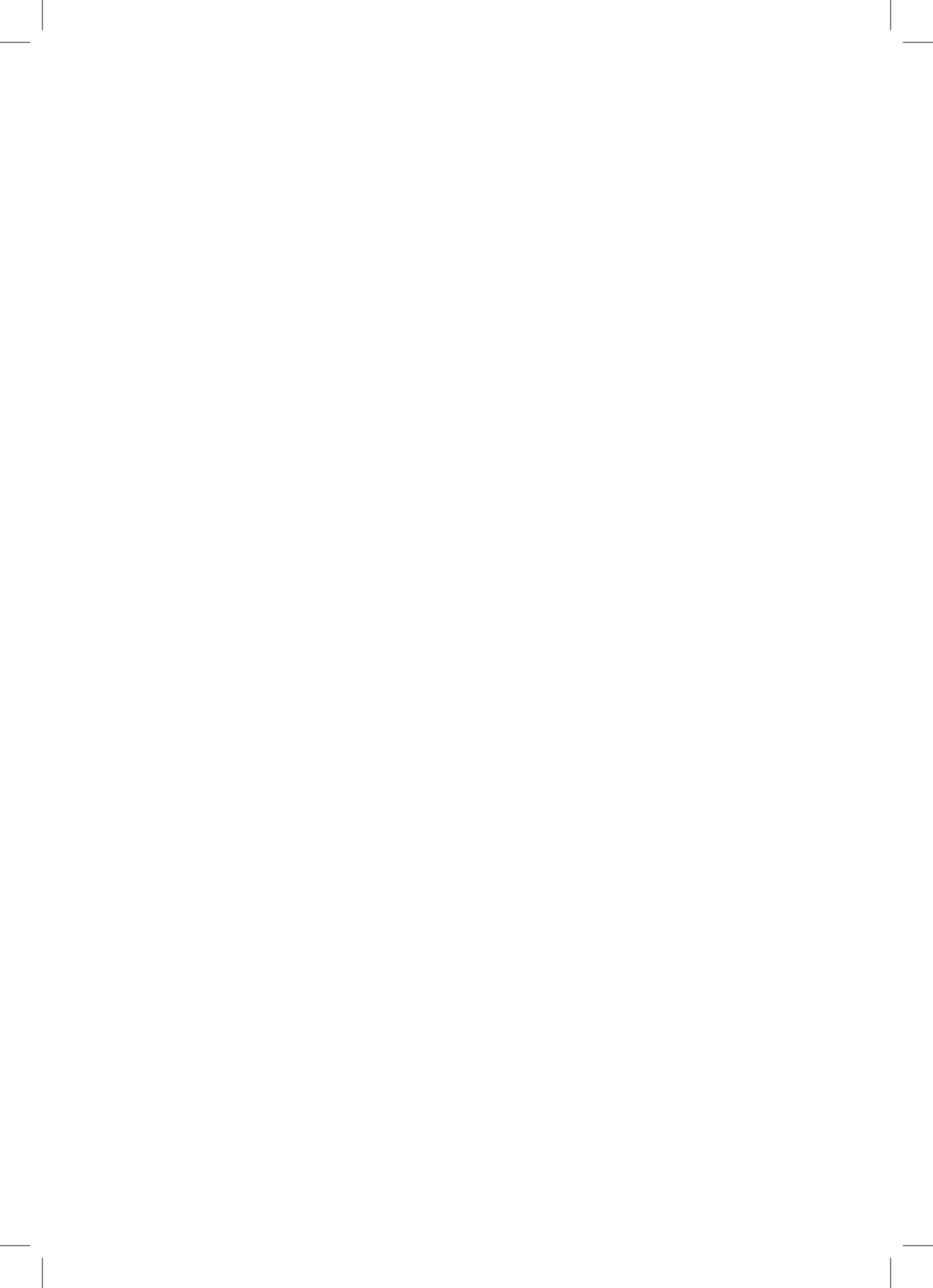


IPR  
PRĀHA

UrbanAdapt  
Adaptace měst na změnu klimatu

CzechGlobe  
Ústřední výzkumný ústav atmosféry AV ČR, s.r.l.

ISLAND  
LEIFSTYRN  
HOFN  
eea  
grants



## **Urban adaptation, planning and practice: Supporting nature-based solutions**

The Conference is organized under the auspices of and Ms. Petra Kolínská, Deputy Mayor of the City of Prague and Ms. Jana Plamínková, Councillor of the City of Prague

### **Date of the Conference:**

17<sup>th</sup> – 19<sup>th</sup> October 2016

### **Venue:**

Prague City Council  
Mariánské náměstí 2  
110 00 Prague



## **About the conference:**

As cities play an important role in climate change adaptation, there is a need to integrate and mainstream adaptation into decision-making of local stakeholders. The EU Adaptation strategy supports the ecosystem-based approaches to adaptation as cost-effective solutions that provide a wide range of co-benefits.

## **The Conference aims to:**

- Address key challenges in urban adaptation and ecosystem-based approaches in research, policy and practice
- Provide examples of approaches to assess climate change related risks and vulnerabilities
- Share experiences and lessons learned for urban planning and adaptation across European cities
- Demonstrate variety of co-benefits of nature-based solutions in cities

The conference is carried out in the frame of UrbanAdapt project - Development of urban adaptation strategies using ecosystem-based approaches to adaptation (<http://urbanadapt.cz/en>), supported by grant from Iceland, Liechtenstein and Norway.

The conference is organized by CzechGlobe – Global Change Research Institute and Prague Institute of Planning and Development.

Simultaneous interpretation Czech-English/English-Czech will be provided during the conference.

**CONFERENCE PROGRAMME**

**MONDAY**

**17<sup>th</sup> OCTOBER 2016**

**„Challenges for adaptation  
in cities“**

9.00 - 9.30 Registration



### **Official welcome by the hosts**

9.30 - 9.40 Welcome by Mayor of the City of Prague,  
Mrs. Adriana Krnáčová

9.40 - 9.50 Opening remark by Ambassador of His Majesty the King  
of Morocco Mrs. Souriya Otmani




### **Opening speeches**

9.50 - 10.00 Mrs. Petra Kolínská, Deputy Mayor of the City of Prague

10.00 - 10.10 Mrs. Jana Plamínková, Councillor of the City of Prague

10.10 - 10.20 Vegar Andreassen, Deputy Ambassador of the Kingdom  
of Norway in the Czech Republic


10.20 - 10.30 David Vačkář, representative of CzechGlobe  
and UrbanAdapt project



### **Setting the scene for the adaptation actions, Part I.**

10.30 - 10.45 National adaptation action plan and adaptation in cities  
(Jakub Horecký, Ministry of the Environment of the  
Czech Republic)

10.45 - 11.00 Adaptation strategy of the Prague city (Štěpán Kyjovský,  
director of Adaptation strategy of the City of Prague,  
Prague City Council)



11.00 - 11.20 Coffee break



## **Setting the scene for adaptation actions, Part II.**

- 11.20 - 11.40 Adaptation and resilience: Experience from Iceland (Gudrun Pétursdóttir, Institute for Sustainability Studies, University of Iceland)
- 11.40 - 12.00 Urban adaptation to climate change in Europe: Transforming cities in a changing climate (Birgit Georgi, European Environmental Agency)
- 12.00 - 12.20 BASE: Climate change adaptation across Europe (Hans Sanderson, Aarhus University)



12.20 - 13.20 Lunch



## **Experiences from the Czech cities: adaptation and strategy development**

- 13.20 - 13.30 Experiences with preparation of Prague adaptation strategy (Mária Kazmuková, Prague Institute of Planning and Development)
- 13.30 - 13.40 Realisation of the adaptation in Pilsen (Pavlína Valentová, Urban Planning and Development Institute of the City of Pilsen)
- 13.40 - 13.55 Climate change adaptation in the Brno city and preparation of Brno Strategy for 2050 (Eva Kalová, Office of Strategies, Brno City Council)
- 13.55 - 14.10 Development of Strategic plan of Ostrava city and preparation of adaptation strategy (Ondřej Dostál, Office of Strategies, Ostrava City Council)
- 14.10 - 14.20 Discussion: Adaptation of the cities in the Czech Republic – looking for solutions




14.20 - 14.40 Coffee break




## **Adaptation in European cities and nature-based solutions**

- 14.40 - 15.10 Experience with development of adaptation strategy and Isar river revitalization (Isar-Plan) in the city of Munich (Veronika Wirth, Department of Health and Environment, Environmental Planning and Protection of Natural Resources, coordinator of the climate change adaptation strategy and Daniela Schaufuß, Building Department, leader of unit Hydraulic Engineering, project leader Isar-Plan)
- 15.10 - 15.25 UHI Strategyplan Vienna – current status and perspectives of the implementation process (Jürgen Preiss, Unit of Spatial Development, City of Vienna)
- 15.25 - 15.40 Climate change adaptation in Reykjavík (Hrönn Hrafnisdóttir, Department of Environment and Planning, Reykjavik City)
- 15.40 - 15.55 Experience with development of adaptation strategy and action plan in Bratislava: with example of project H2020 RESIN methodology (Mária Kozová and Eva Pauditšová, Comenius University in Bratislava; Eva Streberová, Department of principal architect, Bratislava City Hall)
- 15.55 - 16.10 The new Covenant of Mayors for Climate and Energy - Inspiring Cities in Taking Action for Adaptation (Laura Creazzo, Covenant of Mayors for Climate and Energy)
- 16.10 - 16.25 Climate change adaptation in cities: Challenges and Opportunities (Tomáš Metelka, RAMBOLL)
- 16.25 - 17.00 Panel discussion: „Challenges and opportunities for adaptation in cities“



18.00 - 20.00 Conference dinner, Gala reception at the Residence of the Mayor of Prague (Mariánské náměstí 98/1, Praha 1)





**CONFERENCE PROGRAMME**

**TUESDAY**


**18<sup>th</sup> OCTOBER 2016**

**„Urban adaptation in science  
and practice: use of  
nature-based solutions”**

8.30 - 9.00 Registration



### **„Adaptation in science and practice: use of nature-based solutions”**

- 9.00 - 9.20 Green and blue infrastructure: Links to people’s health, wellbeing and quality of life (Catharine Ward Thompson, Director of OPENspace Research Centre, University of Edinburgh)
- 9.20 - 9.40 Climate change impacts in the Czech Republic (Pavel Zahradníček / Miroslav Trnka, CzechGlobe)
- 9.40 - 10.00 Nature-based solutions and adaptation in cities: success, opportunities and barriers (Nadja Kabisch, German Centre for Integrative Biodiversity Research (iDiv))
- 10.00 - 10.15 CzechAdapt - A system for exchanging information on climate change impacts, vulnerability in the Czech Republic (Pavel Zahradníček, CzechGlobe)
- 

10.15 - 10.35 Coffee break



### **PARALLEL SESSIONS (10.35 - 12.35)**

#### **1. Prague and development of the adaptation strategy - session organized by IPR Praha** (Great conference hall; moderated by Michal Žák)


- 10.35 - 10.45 Structure of the strategic plan proposal for Prague, 2016 update (Ivan Duškov, IPR Praha)
- 10.45 - 10.55 Analysis of changing climate in Prague and its prospective development (Pavel Zahradníček, CzechGlobe)
- 10.55 - 11.05 Structure of the proposal of climate change adaptation measures in Prague (Mária Kazmuková, IPR Praha)
- 11.05 - 11.15 Floods and flood-protection measures in Prague (Jaromír Kačer, MHMP)
- 11.15 - 11.25 Experience with implementation of flood-protection measures in Munich (Daniela Schaufuß, Building Department, City of Munich City of Munich)

- 11.25 - 11.35 Implementation of adaptation measures in Munich city (Veronika Wirth, Department of Health and Environment, City of Munich)
- 11.35 - 12.25 Panel discussion
- 12.25 - 12.35 Summary and conclusions


## **2. Practical examples and technological solutions for adaptation in cities – session organized by Environmental Partnership**

(room No. 349, 3rd floor; moderated by Miroslav Kunderata)

- 10.35 - 10.55 Park „Pod plachtami“: example of rainwater management in a residential district (Jana Drápalová, Mayor of the city district Brno Nový Lískovec)
- 10.55 - 11.15 Centre Liko-Noe: future of green walls and water management not only for industrial buildings (Marián Streda, technical director Liko-S)
- 11.15 - 11.35 Center „Otevřená zahrada“ of Environmental Partnership: The effectiveness of diverse technologies for climate change mitigation in a historical city center (Vlastmil Rieger, Environmental Partnership)
- 11.35 - 11.55 The right climate change adaptation measure at the right place – examples from Trnava and Miškolc (Andrej Šteiner, Carpathian development institute, Košice)
- 11.55-12.35 Panel discussion, questions from the audience



12.35 - 13.40 Lunch



### **„Adaptation in science and practice: UrbanAdapt project“**

- 13.40 - 13.55 UrbanAdapt: Adaptation strategies supporting nature-based solutions (Eliška K. Lorencová, CzechGlobe)
- 13.55 - 14.10 Financial tools to support urban adaptation (Jiří Louda, UJEP)
- 14.10 - 14.25 Mapping urban heat island using remote sensing techniques (František Zemek, CzechGlobe)

14.25 - 14.40 Meteorological modelling of the urban heat island effects (Jaroslav Resler, ČVUT)

14.40 - 15.00 Coffee break

## **PARALLEL SESSIONS (15.00 - 16.30)**

### **3. World café: experience sharing, barriers in adaptations**

(room No. 349, 3rd floor; moderated by Michal Žák)

15.00 - 15.10 Introduction to the session (Eliška K. Lorencová, CzechGlobe)

15.10 - 15.30 Institutional analysis: the potential and acceptance of the use of ecosystem-based adaptation measures (Kristýna Rybová, UJEP)

15.30 - 16.30 World café + summary of the outcomes

### **4. Experience exchange among projects funded by Norwegian funds and scientific data support for adaptations**

(Great conference hall; moderated by David Vačkář) - in czech only

15.00 - 15.10 Adaptation of the settlements to climate change (Michael Pondělíček, Civitas per Populi, o.p.s. / Adam Emmer, CzechGlobe)

15.10 - 15.20 Adaptation strategies of small cities (Josef Novák / Viktor Třebický, CI2)

15.20 - 15.30 Supporting information exchange on climate change impacts and climate change adaptation at national and regional levels (Tomáš Chabada, Masarykova Univerzita)

15.30 - 15.40 Conceptualisation of vulnerability to climate change (Miroslav Havránek, Environment Center of Charles University in Prague)

15.40 - 15.50 Local climatic zones for studying present and future climate of Brno (Jan Geletič, Masaryk University / Michal Lehnert, Palacký University in Olomouc)

15.50 - 16.30 Panel discussion, questions from the audience

16.30 - 16.50 **Closing ceremony, plenary session**

**CONFERENCE PROGRAMME**  
**WEDNESDAY**  
**19<sup>th</sup> OCTOBER 2016**

**Excursion: examples  
of implemented adaptation  
measures**

**Three options\*:**

1. Revitalization of Prague's creeks – Rokytka  
(start at 9.30, duration cca 2 hours)
2. Karlín born out of the water  
(start at 9.00, duration cca 3 hours)
3. Karlín born out of the water  
(start at 14.00, duration cca 3 hours)



\*the number of participants is limited to 40 for each of the excursion options



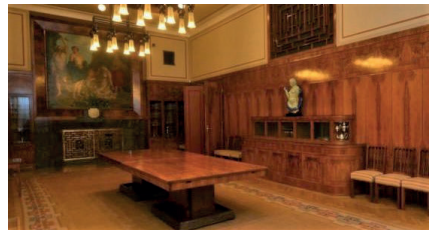
Conference Reception at the Residence of the Mayor of Prague

## Urban adaptation, planning and practice: Supporting nature-based solutions

Date of the Conference Dinner:  
October 17, 2016 from 6 pm

Venue for the Conference Dinner:  
The Residence of the Mayor of Prague, Mariánské náměstí 98/1, Praha

The Residence of the Mayor of Prague is located in the new building of the Municipal Library, which was built between the years 1925 and 1928 by Prague Municipal Saving Bank as a gift for the capital city on the occasion of the 60th anniversary of its existence and also to mark the 10th anniversary of the Czechoslovak Republic. The Mayor's Residence occupies the whole of the first and second floor of the front part of the library. It has a separate entrance from the corner of Platněřská and Žatecká Street (next to north-eastern corner of Mariánské Square).



## 1. Excursion: Revitalization of Prague's creeks

### Urban adaptation, planning and practice: Supporting nature-based solutions

Date of the excursion:  
October 19, 2016

Venue for the excursion:  
Revitalization of Rokytká



The excursion will show us revitalized parts of the longest Prague brook – Rokytká. The brook and its surrounding have undergone many significant changes in the past. The area, formerly widely used for recreation, succumbed to industrial development, what caused radical regulation of Rokytká. During our excursion, we will focus on results of successful revitalization work done around Hořejší Pond, Malý Pond and at stream bed under Smetanka Hill between 2012 and 2014. The most significant achievements include creation of natural meandering and shallow stream bed above Hořejší Pond, and bank stabilization made by boulders and so called Alpine adjustment under Hořejší Pond. A defunct weir has been removed and substituted by chutes passable for migrating fish; dumps have been excavated, the stream bed has been widened and diversified as well as new ecological sunken area has been created. The revitalizations have raised attractiveness of the locality and interconnected water environment with surrounding landscape.

Tour guide: **Jiří Karnecki, Department of Environmental Protection, Prague City Council**

Duration: **aprox. 2 hours**

Registration: please, enroll your participation in excursion **on Monday 17.10. 2016** at the registration desk of the UrbanAdapt Project Conference. There is a maximum of 40 participants.

Time, meeting point: **we will meet at 9.30 am, in front of Hloubětín Metro exit on the right; Chvalovská/Poděbradská Street** (direct exit of B line)

Excursion trail: the excursion will end at bus stop "Pod Táborem". From here, bus n° 109 goes to Palmovka Metro Station, and buses n° 177 and 183 go to Vysočanská Metro Station (both B line).



## 2. Excursion Karlín born out of water

### Urban adaptation, planning and practice: Supporting nature-based solutions

Date of the excursion:  
October 19, 2016

Venue for the excursion:  
Prague quarter Karlín

The excursion will bring us to Karlín, one of the most perspective and the fastest-developing localities in Prague. We will take a look at examples of new buildings on Rohan Island (e. g. Main Point Karlín, River City Prague), which are remarkable by its accent to ecologically sustainable construction. We will occupy ourselves with revitalization of former industrial compounds and several highly regarded examples of industrial building conversions will be shown (e.g. Forum Karlín, Cornlofts Šaldova, Kotelna a strojovna/Boiler house and engine house). Neither revitalization of public open spaces will not be omitted – we will view successful revitalization of Karlín Square and Kaizl Gardens.

Tour guide: **Petr Kučera**  
Duration: **aprox. 3 hours**  
Organization: the excursion is organized in two rounds (morning and afternoon time); each round is planned for maximum of 40 participants.  
Registration: please, sign up to a particular excursion on **Monday 17. 10. 2016** at the registration desk of the UrbanAdapt Project Conference  
Time, meeting point: **the first meeting time is at 9 am, the second at 2 pm;**  
**the meeting point is same for both time slots – at Florenc Tram Stop; Sokolovská Street, next to Metro exit (direct exit of B line)**





## **About UrbanAdapt project:**

### **Development of urban adaptation strategies using ecosystem-based approaches to adaptation**

Cities play an important role regarding potential climate change impacts. Three quarters of European population live in urban areas that are often vulnerable and poorly prepared to respond to climate change impacts, such as heat waves, water scarcity, drought or floods. In addition to the population, in urban areas high proportion of socio-economic activities as well as production of greenhouse gases take place. The risks associated with climate change in urban areas increase their vulnerability and can have widespread negative impacts on quality of life (safety, health, income, and assets), as well as on the national economy, urban ecosystems and natural capital.

UrbanAdapt project aims to initiate and progress the process of urban adaptation strategies development, while proposing and evaluating suitable adaptation measures and actions with the support of ecosystem-based approaches in the three pilot cities in the Czech Republic (Prague, Brno, Pilsen). The intermediate goals of the project include climate change vulnerability assessment, identifying in collaboration with stakeholders relevant adaptation measures, evaluation of the preferred measures in terms of the costs and benefits, design and formulation of adaptation strategies for the three pilot cities and initiating steps for their implementation. An important component of the UrbanAdapt project is incorporation of the „green and blue infrastructure“ as well as ecosystem services into the adaptation cycle and individual adaptation measures and adaptation alternatives.

Project is coordinated by Global Change Research Institute, The Czech Academy of Sciences, Department of Human Dimension of Global Change. Project partners are Institute for Sustainability Studies, University of Iceland, Urban Planning and Development Institute of the City of Pilsen, Prague Institute of Planning and Development, CI2, o.p.s., Czech Technical University in Prague, Faculty of Transportation Sciences, Environmental Partnership, and Jana Evangelisty Purkyně University in Ústí nad Labem, Faculty of Social and Economical Studies.

UrbanAdapt project (EHP-CZ02-OV-1-036-2015) is supported by grant from Iceland, Liechtenstein and Norway.

Project website: <http://urbanadapt.cz/en>



